

Epson CreativeZone

Printing onto an Inkjet Printable CD or DVD

What's the advantage to printing directly onto an Inkjet Printable CD or DVD, instead of onto a label?

1. Convenience is probably the greatest advantage: it's easy, it's fun, and you don't have to waste time getting the label lined up. Inkjet Printable CDs and DVDs are widely available for purchase at office supply stores, and online. Make sure the packaging label reads "Inkjet Printable".



2. No need to purchase labels *and* CDs or DVDs, so you save money, too—up to 50%.
3. No need to worry about labels becoming separated from the disc, and no need to worry about the industrial solvents in adhesives damaging the disc's contents. Stick-on labels generally don't work well in slot drives: car stereos, laptops, etc.

Here are a few tips that you should follow when printing on your Inkjet Printable CD/DVD:

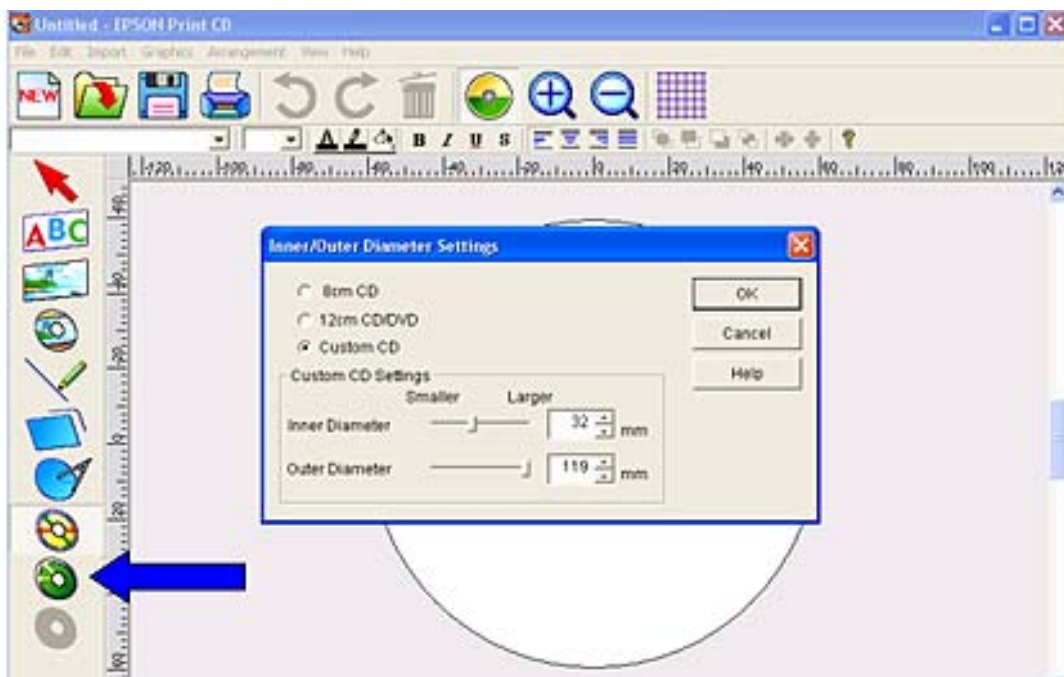
1. First, you need to determine what type of Inkjet Printable CD/DVD you have, so you can set the correct "inner" and "outer" print area diameters for a print that completely covers the printable disc surface.
2. The key words to look for when identifying your Inkjet Printable CD/DVD are "Hub Printable", meaning the printable surface starts at the outside edge of the disc, and ends at the inner hole (no visible clear plastic surrounding the hole) making the "Inner Diameter" 20 mm.



3. With a "Standard" printable CD/DVD, you will have clear plastic surrounding the inner hole, so the "Inner Diameter" could be anywhere from 35 - 40 mm, depending on the disc's manufacturer.

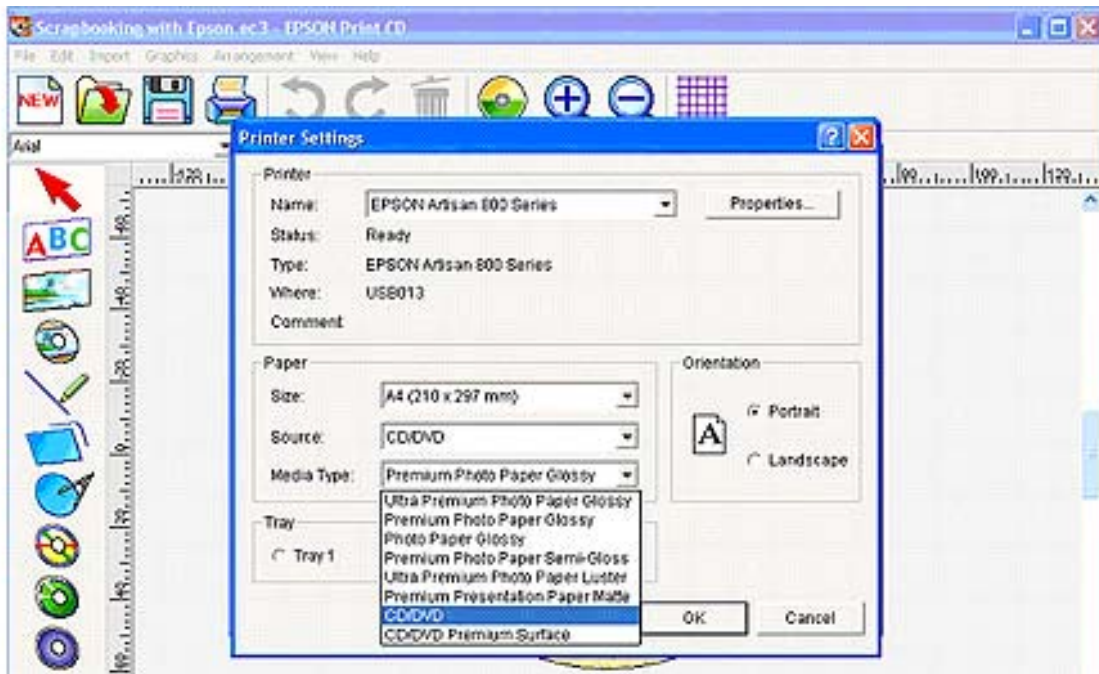


4. To determine the inner and outer diameters of the CD/DVD that you are using, measure in millimeters (1 centimeter = 10 millimeters).
 5. The Default settings in the **Epson Print CD** program are typically 43 mm inner and 116 mm outer diameters.
- Note:** Printing all the way to the edge may leave ink on the non-printable shiny rim of the CD. You can remove it by wiping gently with a tissue.
6. Before printing, burn your content onto the CD or DVD, and then be sure to handle it very gently to avoid damaging the recorded side.
 7. Before preparing a CD design, set the inner and outer diameters in the program. Open **Epson Print CD** and click on the **green CD icon**.



Note that there are two CD size settings: the larger 12 cm CD/DVD and the 8 cm “mini”, usually found online. The largest outer diameter is 120 mm; the smallest inner diameter is 20 mm.

8. *Time to be creative!* Add a background, images and text to your CD/DVD design by clicking on the buttons located in the left side column.
9. To print, click on **File | Print**. Be sure the correct printer is selected. To view print settings, click on Manual Print; you will see the **Printer Settings** box pop up.



Note: Most Inkjet Printable CDs and DVDs have a standard surface; a higher-quality premium surface is available, usually online. Inkjet Printable CDs can be purchased online directly from the [Epson Store](#). If water resistance is important, some media, such as Imation AquaGuard™, offer a highly water-resistant surface.