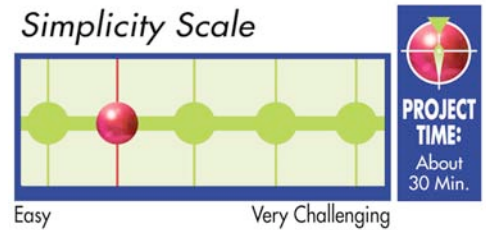




Project #241

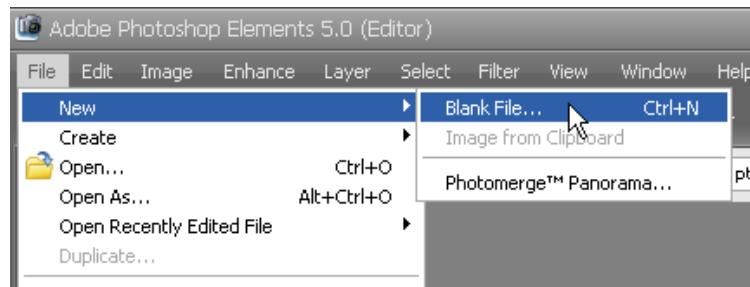
Digital Scrapbook Place: "Oh, Baby!" Scrapbook Page



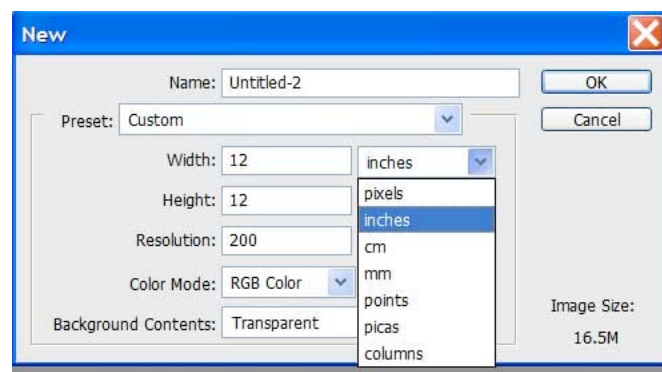
Creating a Digital Scrapbook Page using Adobe® Photoshop Elements 5.0® and Digital Scrapbook Place scrapbook graphics.

BEGIN A NEW PAGE

Open Adobe Photoshop Elements 5.0. Create a new file (File- New- Blank File).



Enter the desired scrapbook page size into the boxes as shown below. (Access inches by clicking on the drop down arrow if necessary.) Some of the popular sizes are 12x12, 8.5x11, 8x10, and 8x8. *For good print quality, always use at least 200 pixels per inch in the resolution box.*



OPEN YOUR PHOTOS

Open your photos (File – Open). Browse your hard drive to find the photos you wish to include in your scrapbook layout. Then click Open.

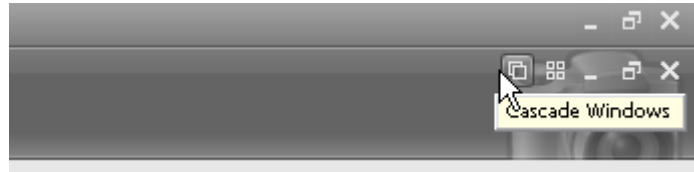
Your photos will open in the same workspace as your new file and also show in the Photo Bin at the bottom of the workspace.

OPEN YOUR GRAPHICS

Open your graphics (File – Open). Browse to find your desired graphics. Browse your CD drive if you are using a graphics CD such as one the [Scraps of... lines of CDs](#) by Digital Scrapbook Place. Or browse your hard drive to find graphics you downloaded from a website like [Digital Scrapbook Place](#). This example uses graphics from the [Oh Baby Page Kit](#) from the [Scraps of Life – Baby Mine CD](#).

Your graphics will open in the same workspace as your photos and new file and also show in the Photo Bin at the bottom of the workspace.

To easily access any of the files, click on it in the Photo Bin and it will move to the top in the workspace. If you only see one file in the workspace, click the left icon on the top right of the workspace (shown below) to change to Cascade Windows mode. This will show all your files, with the selected one on the top.

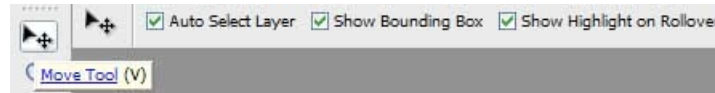


BEGIN BUILDING YOUR PAGE

Click on your new blank file to bring it to the top of the workspace. This will be your layout file.

Then do the same with the background of your choice.

You can move the files around on the workspace by clicking and dragging on the top bar of the image window, using the Move Tool (the top tool in the Toolbar).



ADD A BACKGROUND

Using the Move Tool, click anywhere on the background file and drag the file onto the new blank image. Then drag it into place with the Move Tool. You may now close the background file.

ADD A PHOTO

Click on your first photo in the Photo Bin to bring it to the top in the workspace.

Using the Move Tool, click and drag it onto your layout.

You will notice that the image has a “bounding box” around it which allows you to rotate and resize the image. To do this, click on one of the small boxes at the corners of the bounding box and drag in or out to resize. By default this tool is set to constrain proportions, so it will resize without distorting the image.

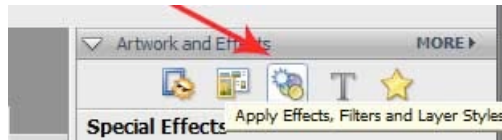
If you wish to rotate your image, hover your mouse outside the corner of your image. You will see a small set of arrowed angles appear. Click and drag to rotate your image in any direction.

To commit your change, click on the small green arrow or press Enter.

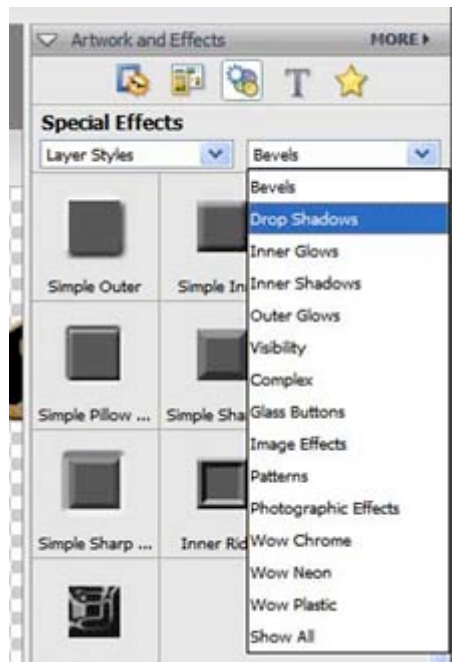


ADD A DROP SHADOW

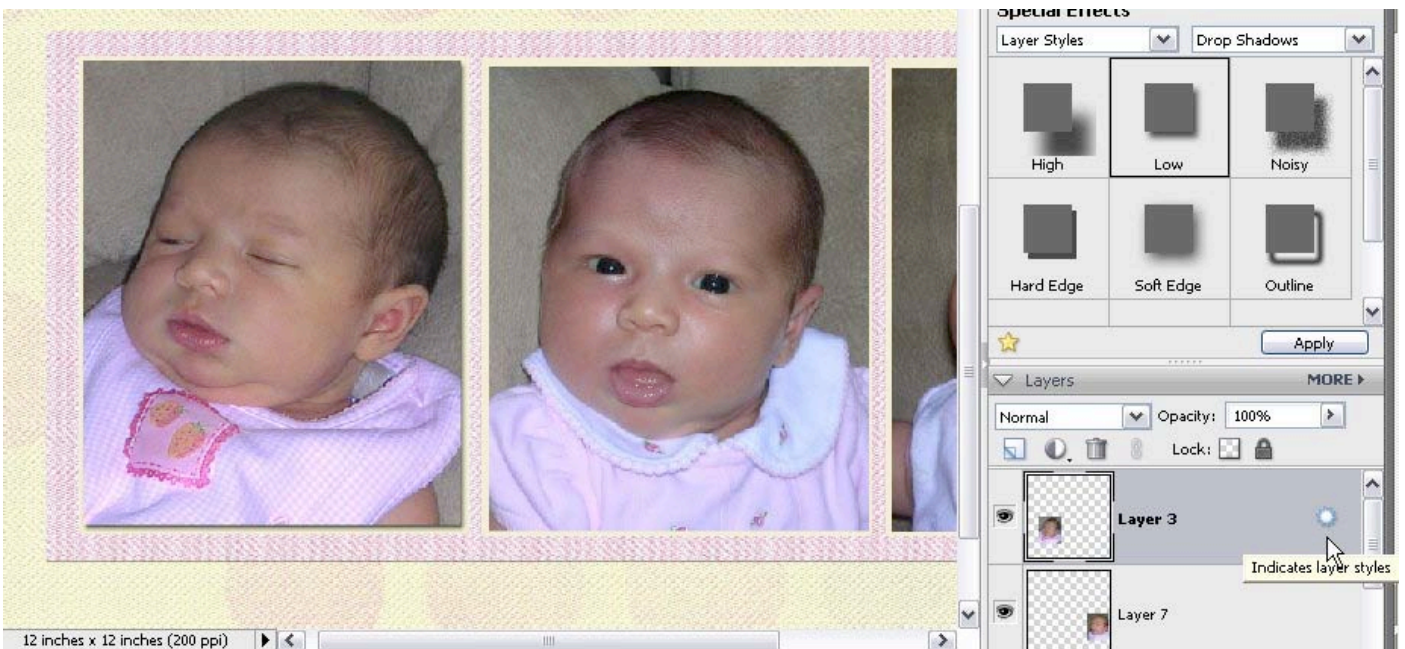
For a scrapbook layout to look realistic, add a drop shadow to your photo with a Layer Style.



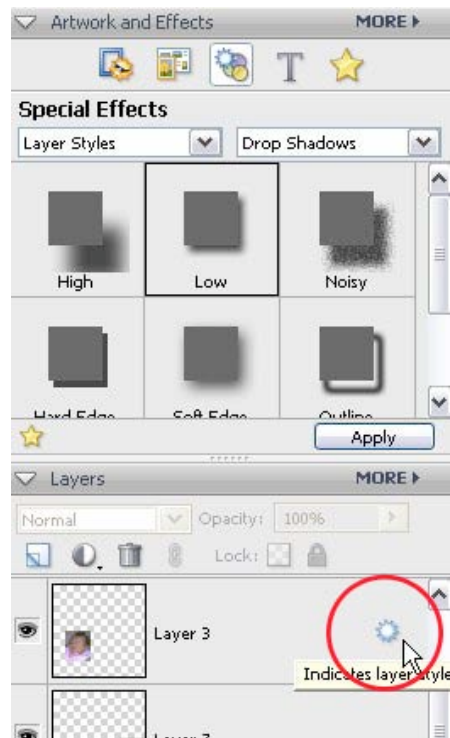
On the right side of your workspace in the Artwork and Effects palette, click on the icon that looks like a sun and other shapes. This opens the Effects Filters and Layer Styles Palette. Choose Layer Styles from the left drop down box and Drop Shadows from the right drop down box.



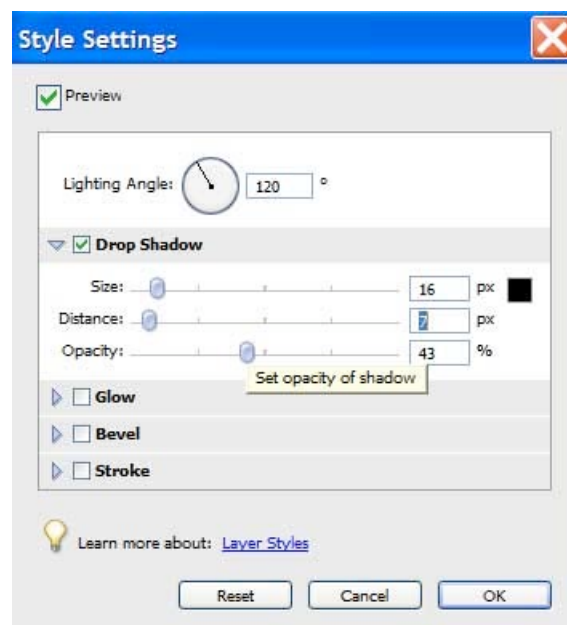
Double click on the “Low” option to apply it to the photo layer.



You can adjust the amount and opacity of the drop shadow by clicking on the sun shape (layer style) in the Layer palette as shown below.



Double click to open a dialogue box with sliders and adjust the shadow to your desired preference.



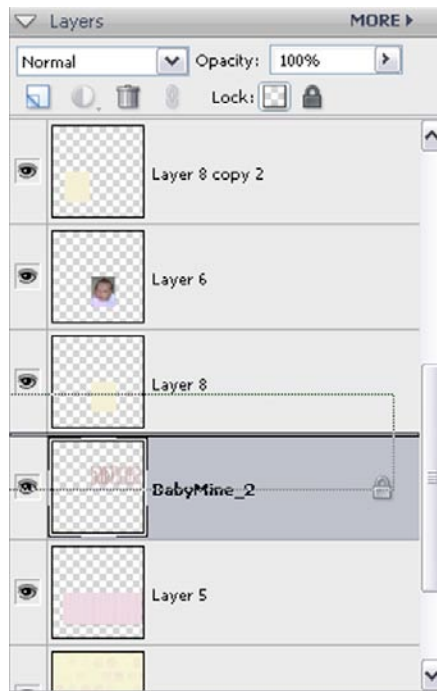
Most [Digital Scrapbook Place](#) graphics come complete with an appropriate drop shadow and need no extra shadow added. Remember to add shadows to each of your own photos for realism.

ADD REMAINING PHOTOS AND EMBELLISHMENTS

Now click on the embellishment file you wish to add next in the Photo Bin. Using the Move Tool as before, click and drag it onto your layout and position where you desire. Repeat this procedure with any additional photos or embellishments you wish to add to your layout. Each item will be added in its own layer automatically in your layout file.

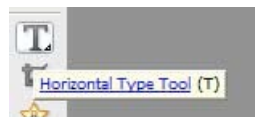
You can move any of the items in your layout at a later date by clicking on the relevant layer in the Layer palette to select that item.

You can also move any item above or below another item by clicking on the relevant layer in the Layers palette and dragging it above or below another layer.



ADD JOURNALING

To add journaling to your layout, click on the Type Tool in the Toolbar. Then click on your layout and drag a rectangle where you wish to add a text box.



Type your desired text then click on the text layer in the Layers palette, the Text Tool, or press Control Enter to apply your text to the layout.

You can alter the color and font choices in the Options Bar at the top of the workspace.

Using the Move Tool, you can move and rotate your text box just like other files.



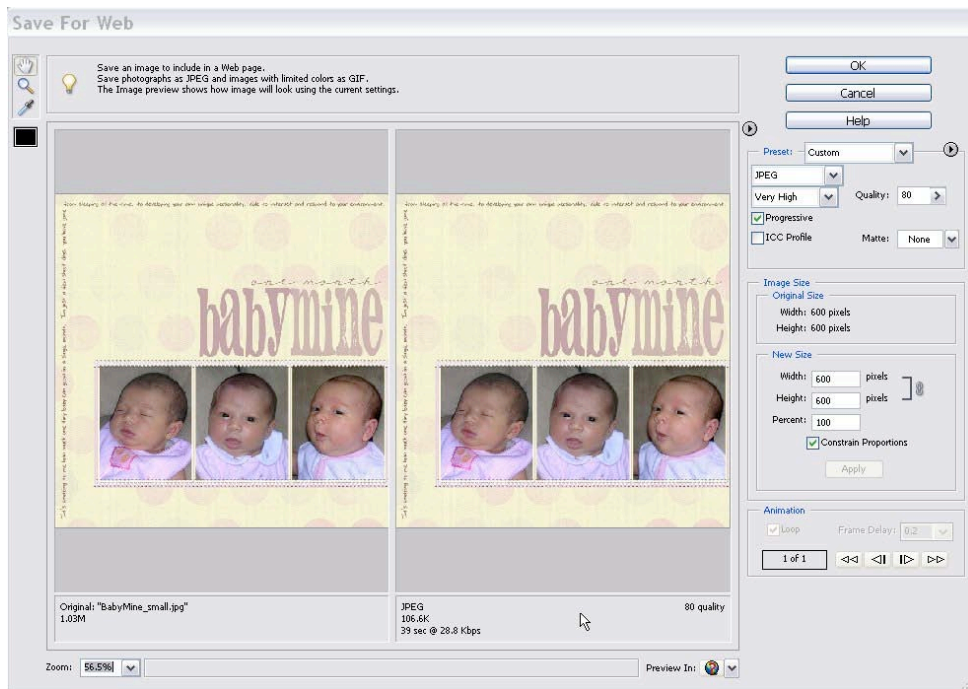
SAVE YOUR LAYOUT

When you are finished, save your file (File – Save As) as a Photoshop file (.psd) with a unique name in a folder on your hard drive. This file will remain with all layers intact and you will be able to reopen and edit it at a later date. It's helpful to include a date and subject in the name for easy finding later.

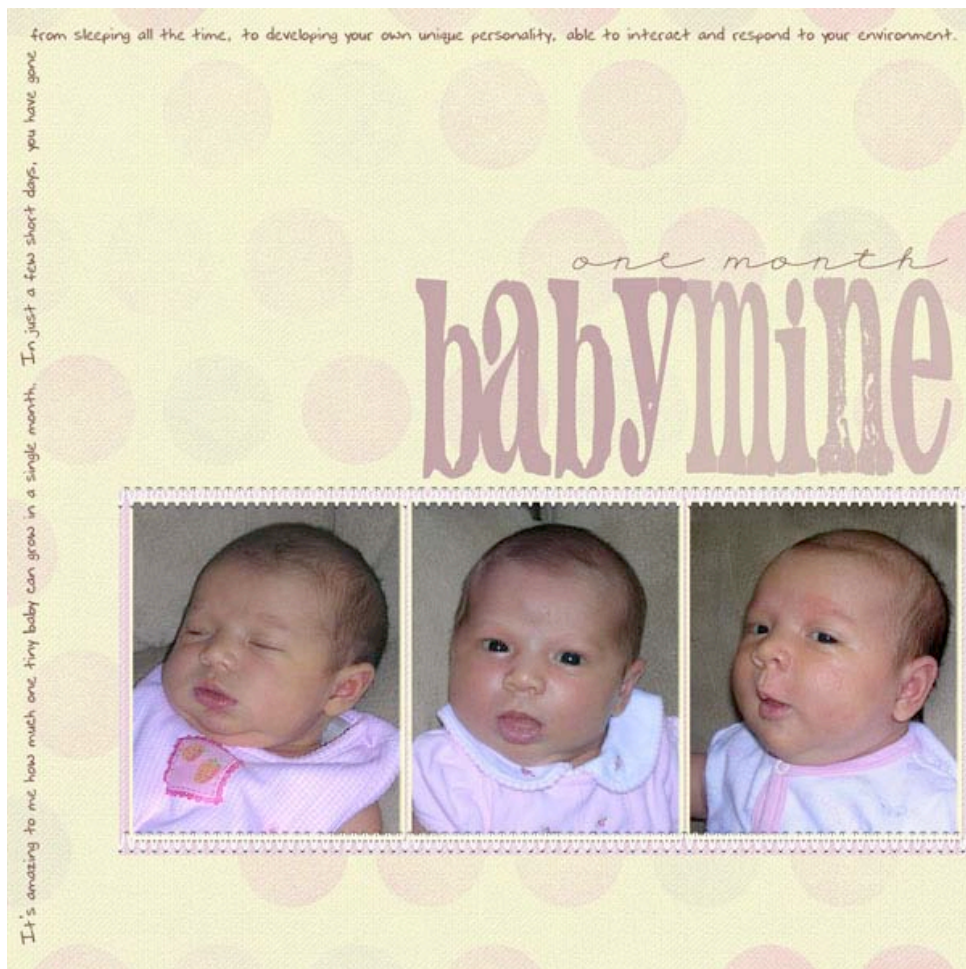
SHARE YOUR LAYOUT

To make your layout small enough to upload to a website or share by email, use the save for web function (File- Save for Web). This will open a new window with two versions of your layout, the original and the new resized file.

In the New Size box, reduce the size to 600px. Be sure Constrain Proportions is checked and click Apply. Under Preset, select JPEG from the drop down menu on the left. Then adjust the quality slider on the right until your file size is under 125 kb. You will see the file size under the resized file image. Click Okay.



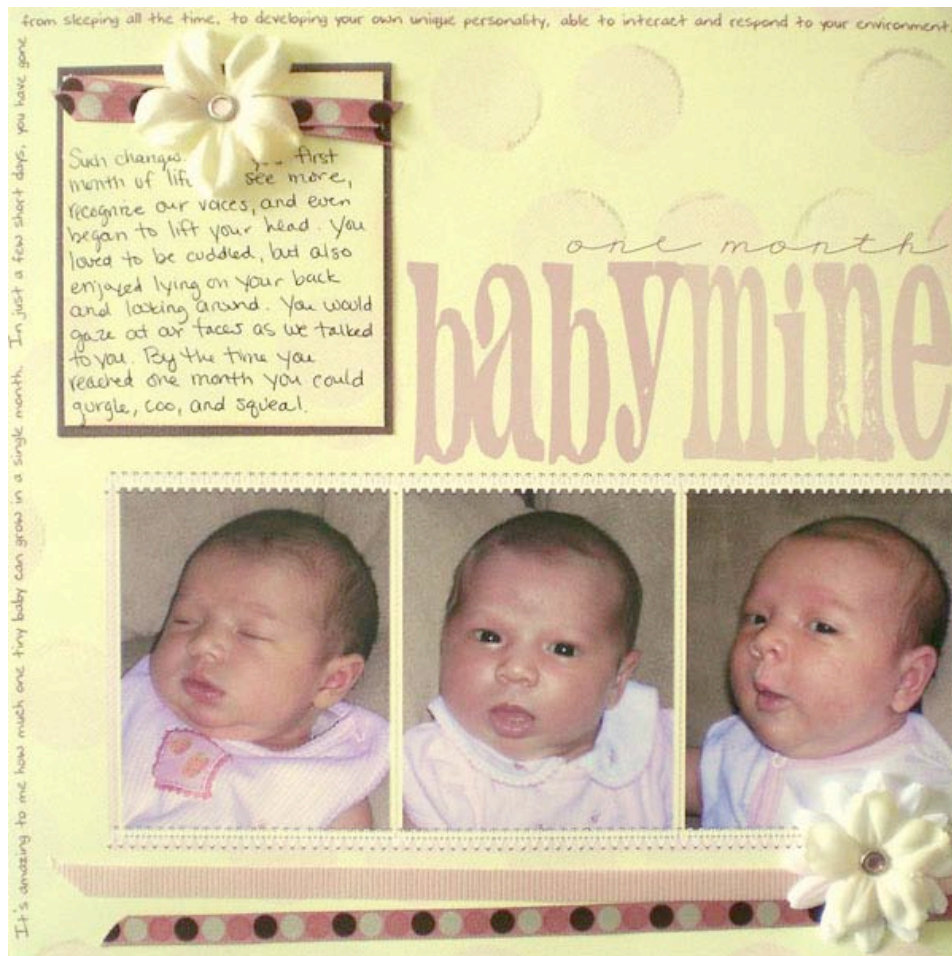
A dialog box will prompt you for a file name. Save with a unique name such as originalfilename_web.jpg. This version will be flattened and will no longer be editable, but it will be a perfect size for emailing to friends and uploading to websites such as [Digital Scrapbook Place](#).



Graphics from the [Oh Baby Page Kit](#) on the [Scraps of Life – Baby Mine CD](#) by Digital Scrapbook Place. Photos by Becky Soto of Virginia.

PRINT AND EMBELLISH YOUR LAYOUT

After printing your page, add traditional scrapbook embellishments, memorabilia, or hand-written journaling.



Digital page embellished by Jamie Wing.

Supplies: Stickles glitter glue, Michael's Dots & Dashes ribbon, Target Dollar Spot Jewel Brads, Darice Finishing Accents Flowers, Die Cuts With a View Brown Textured Cardstock.

Adobe, the Adobe logo, and Photoshop Elements are either registered trademarks or trademarks of Adobe Systems Incorporated in the United States and/or other countries.